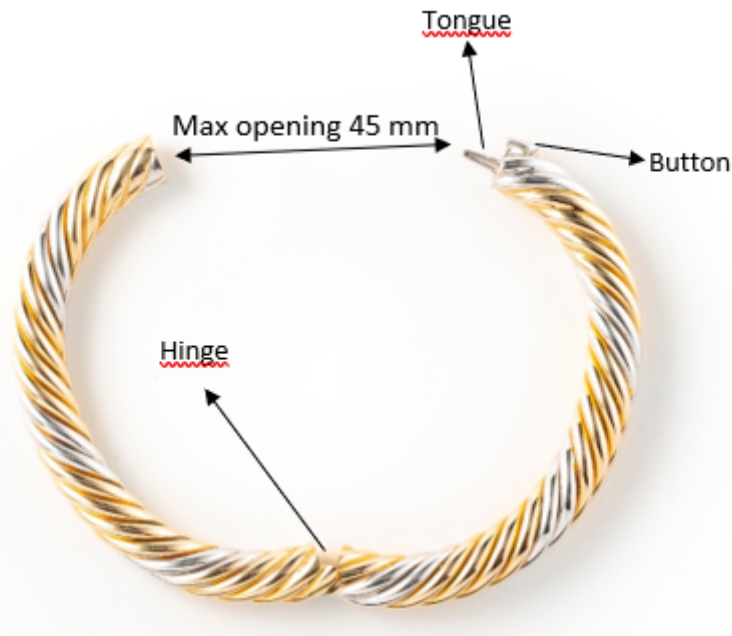


CARE OF THE JEWELS



All our rigid bracelets are made to last although they do need some care to ensure that the clasp and hinge work perfectly.

Each bracelet is designed and guaranteed to open 45 mm. We recommend that you do not force the mechanical movement beyond this extent as the hinge components may distort and create an external burr on the top of the jewel that is visible to the naked eye and felt when touched.

To check the efficiency of the clasp, we recommend not to force it so as not to ruin the balance between the bracelet and the tab. Initially, the clasps of our bracelets may be slightly more rigid to ensure efficiency over time.

Usually the hallmark requested by the customer is placed on the underside of the tongue.